



This information is brought to you by
Owls Hall Environmental working in
partnership with Klargester products.



Excellent Treatment

0845 375 1801
www.ohel.co.uk



RAIN WATER STORAGE TANKS

INTRODUCTION

These tanks are designed for the express purpose of receiving and storing rainwater. The rainwater is collected and used in preference to a mains water supply thus reducing costs. The system can serve various applications, such as washing machines, garden hose pipes, flushing toilets and all other non-drinking water applications.

Tanks are fitted with either standard pipe work. The 3000 and 6000 litre units incorporate a Vermin guard, which is fitted into the overflow pipe work of the Rainwater tanks. The tanks are pre fitted with a 25mm (1 ¼ inch) Tank Connector along within the neck. Klargester tanks are frequently specified & accepted by Local Authorities, major contractors and environmental regulatory bodies.

TANK FEATURES

- ❑ 3000 & 6000 litre tanks available ex stock
- ❑ Pre-fitted inlet and overflow pipe fixtures
Std. Ø110 PVCU piping fitted to 3K/6K tanks
Std. Ø160 PVCU piping fitted to large tanks
- ❑ Pre-fitted 25mm (1 ¼ ") tank connector
- ❑ Pump access via a 450mm diameter neck
- ❑ Bracket maintenance from ground level.

APPLICATION

3000 & 6000 litre tanks are suitable for single small properties. Larger tanks are available for other applications including commercial use. The tank volumes can be matched to suit the drainage area and surrounding space available for the tanks location.

PRODUCT SELECTION

The table overleaf indicates the tank sizes available, please consult our Rainwater Sales Team on ☎ 01296 633000. Klargester have experienced technical representatives operating throughout the UK who can offer on-site advice.

OPERATION

Rainwater is collected and diverted through a leaf filter into the tank via the fitted inlet pipe work. An overflow is fitted in case excess rainwater is collected.

Electronic Rainwater Management systems are available to regulate the Tanks water supply. Three separate systems are available, a Gravity system, a Direct system and a No Mains system. Each system contains a pump, an electronic control unit, and a depth sensor together with all the necessary pipe work and electrical connections. The pump is fitted into the tank on site and depending on which control system is implemented, dispenses the water, either to a header tank or directly to an application.

ACCESSORIES

There is a range of accessories, which can be purchased to use with the Rainwater storage tank. These include: -

- ❑ Ø600 Manhole Covers Part No. (CFL600T)
- ❑ Leaf Filters Part No's. (P103/P104/P105)
- ❑ Ultra Violet Filters

CONSTRUCTION & QUALITY

Klargester rainwater storage tanks are manufactured from durable, rot and corrosion proof glass reinforced plastic, combining light weight with outstanding strength.

All Klargester products are manufactured and accredited to BS EN ISO 9002 Quality Management System.

INSTALLATION

3000 & 6000 litre capacity units may be installed underground in a peashingle backfill. Larger units should be installed on a suitable concrete base slab and surrounded with a concrete backfill. Detailed installation guidelines are supplied with each unit.

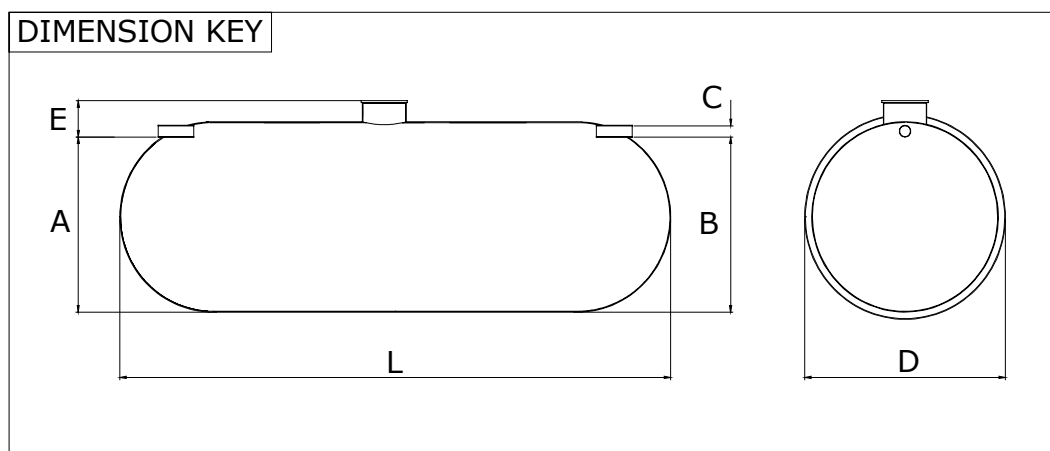
MAINTENANCE

No maintenance is required to the tank itself however; silt may accumulate within the tank. The control system and pump requires infrequent inspection.

RAIN WATER TANK SPECIFICATION

Tank Capacity Litres	Inlet Invert (E)	Unit Diameter (D) BODY	Length (L)	Manhole Cover Dia	Base to Inlet Invert (A)	Base to Overflow Invert (B)	No. of Necks	Standard Pipe Work Diameter. (C)
3000	815	1225	3060	600	1230	1230	1	110
6000	840	1440	4530	600	1390	1390	1	110
12000	800	2010	4640	600	1850	1850	1	160
15000	800	2070	5435	600	1850	1850	1	160
17500	500	2800	4320	600	2510	2510	1	160
22500	500	2800	5090	600	2510	2510	1	160
27000	500	2800	6190	600	2510	2510	1	160
35000	500	2800	7740	600	2510	2510	1	160
44000	500	2800	9460	600	2510	2510	1	160
52000	500	2800	11180	600	2510	2510	2	160

All dimensions are in millimetres.



NOTE: Two necks are present on the 52000 litre Tank at 3315mm from either end.

To specify a Rainwater storage tank, the following information is needed:

- **Calculated area of roof space occupied by property.**

This will help determine the optimum size of unit required, also taking into consideration the occupancy of the building and the uses to which the recycled rainwater is to be put. The roof drainage area, specified by the customer, multiplied by the average annual rainfall in that location, relates to the minimum size of tank required in order to fully optimise the rain water harvesting system.

- **Required discharge (Typical usage)**

Number of instances where water usage from the mains supply could be replaced with the Rainwater harvesting System.

I.e. Flushing lavatories, Washing Machines, Irrigation etc.

The drain inlet invert depth.

The difference between the drain invert depth and the minimum invert (E), rounded up to the nearest half metre, is the length of extension shaft(s) needed.

Extension shafts kits, for site fitting are available in 0.5 metre increments. The maximum recommended invert depth for these Rainwater tanks is 2.0m total.

Units may be installed at greater depths with an appropriate civil engineering design and you must make suitable provision for pump removal and maintenance.

- **Pipe work type & Sizes**

The table indicates the standard pipework fitted. Alternate sizes may be fitted however, please note we do not alter internal pipework dimensions and alternate pipework selections will generally be fitted external to the standard.

Klargester Environmental Ltd.

College Road, Aston Clinton, Aylesbury,

Bucks, HP22 5EW

Tel: 01296 633000

Fax: 01296 633001

<http://www.klargester.co.uk>

uksales@klargester.co.uk



In keeping with the Company policy of continuing research and development Klargester reserves the right to alter specification and drawings without notice.