



This information is brought to you by
Owls Hall Environmental working in
partnership with Klargester products.

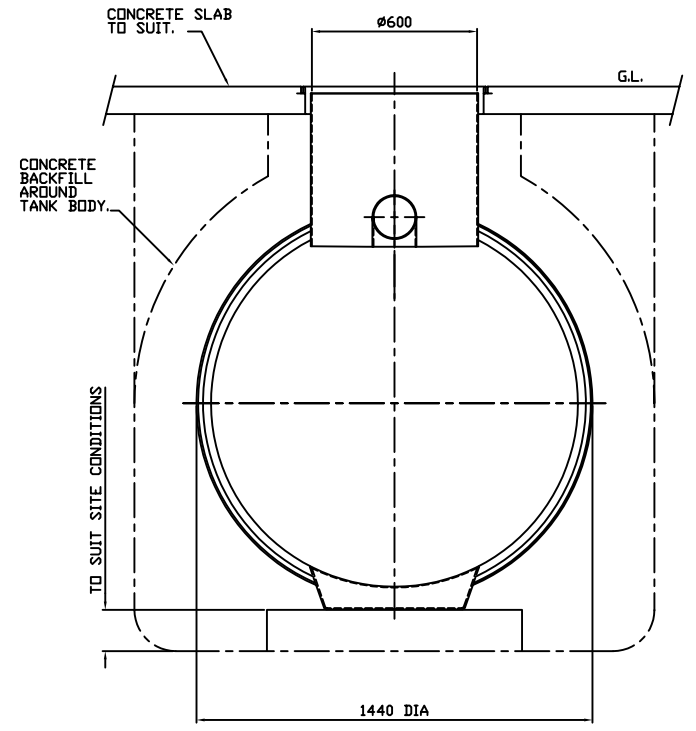
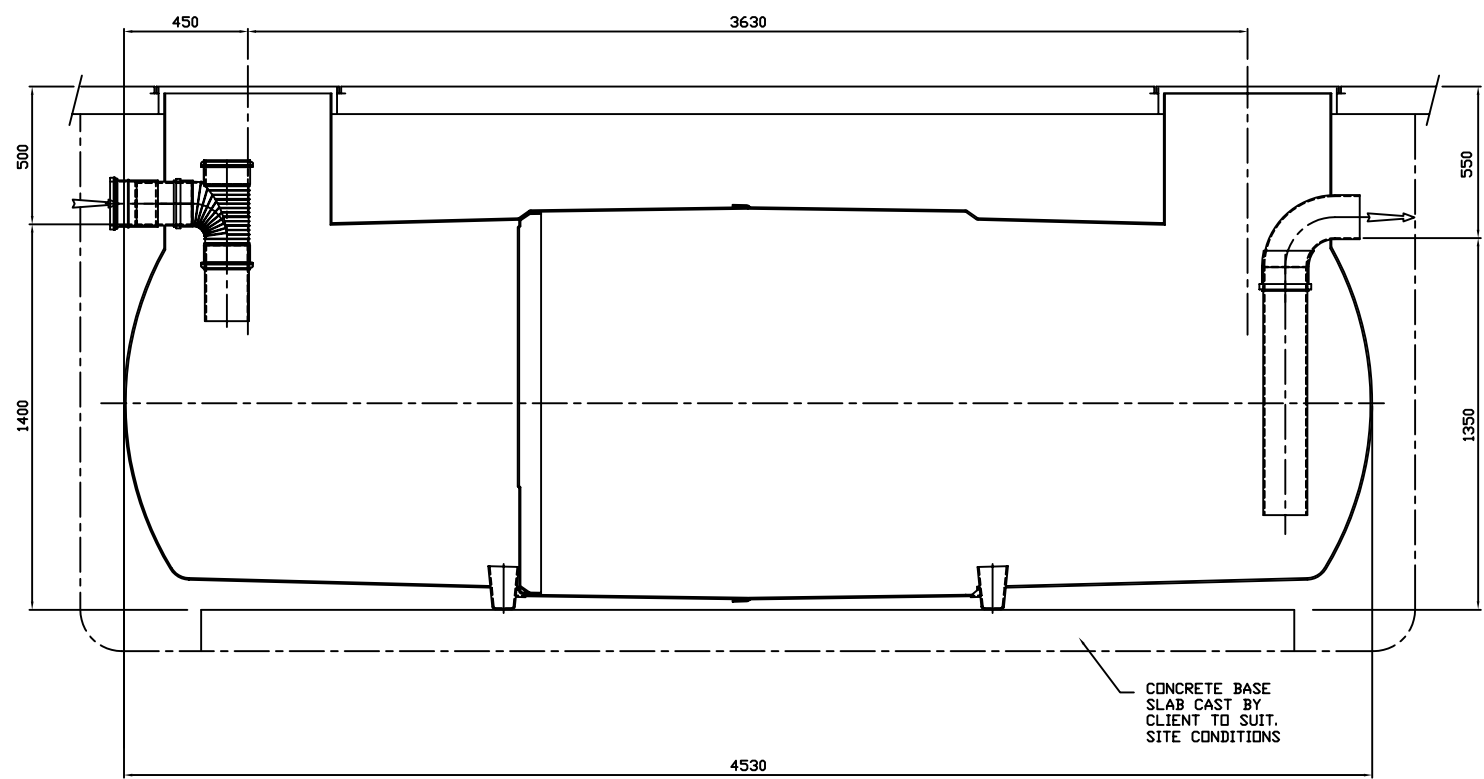
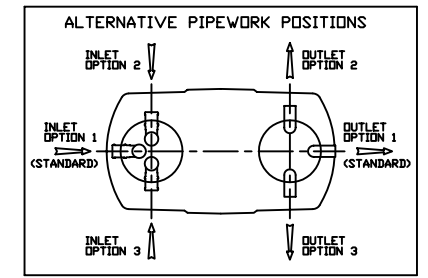
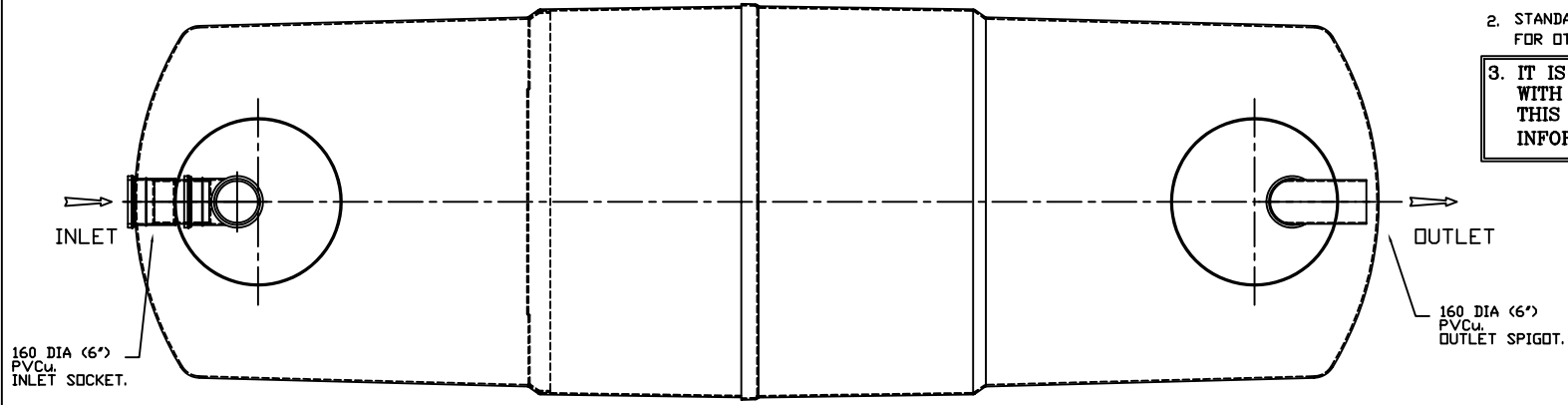


Excellent Treatment

0845 375 1801
www.ohel.co.uk

NOTES :-

1. UNITS CAN BE PROVIDED WITH EXTENSION SHAFTS IN 0.5Mtr INCREMENTS.
2. STANDARD INLET/OUTLET PIPES ARE PVCu UNDERGROUND DRAINAGE TO BS4660, FOR OTHER PIPE SIZES AND TYPES AVAILABLE CONSULT KLARGESTER.
3. IT IS ESSENTIAL THAT THIS DRAWING IS READ IN CONJUNCTION WITH INSTALLATION DETAILS PD0021 (SUPPLIED WITH UNIT) THIS DRAWING SHOULD BE USED FOR DIMENSIONAL INFORMATION ONLY

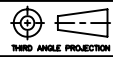


SECTION ON C.L.

UNIT	WORKING CAPACITY	APPROX WEIGHT		FALL ACROSS UNIT
		EMPTY	FULL	
GSD	6000 Litres	310 Kg	6310 Kg	50 mm

ISSUE	DATE	DRAWN	MODIFICATION
4	24.07.02	A.L.	INLET PIPEWORK AMENDED
3	30.01.97	B.S.	BLANKING CAP & DIP PIPE ADDED TO INLET TEE
2	24.01.97	B.S.	CENTRE NECK DELETED #600 NECKS WERE #460
1	21.03.95	A.M.O	INITIAL ISSUE

This drawing is copyright and may not be reproduced or used without the written permission of Klargester Environmental Ltd. KLARGESTER RESERVE THE RIGHT TO CHANGE SPECIFICATIONS WITHOUT NOTICE.



ALL DIMENSIONS ARE IN MILLIMETRES - DO NOT SCALE



Klargester Environmental Ltd.
College Road, Aston Clinton,
Aylesbury, Bucks. HP22 5EW.
Tel:- 01296 633000

TITLE
**GSD
6000 LITRE
GREASE
SEPARATOR**

SCALE: 1:10 SHEET SIZE: A1
DRAWING No. 800729 ISSUE: 4